

SPECIFICATION

Range: **MAXIMO**

Design: **Caimi Lab**

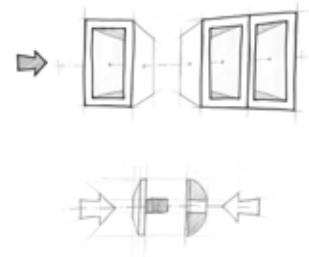
Codes: **469-GY, 469-VO**

Dimensions: height 72 cm, length 24 cm, depth 35 cm.
Capacity 60 L

Description: bin for waste separation with drum and base in 1mm thick sheet-steel powder-coated in dark grey (RAL 7043) or green (RAL 6013) colours, rounded accident-proof edges, the base has a foam profile to protect the floor. Upper lid with hole to dispose of waste, made entirely in powder-coated steel, available in dark grey (RAL 7043) or green (RAL 6013) colours. The lid is hinged to the drum by screws and can be lifted to allow the access to the drum to insert and remove the bin liner. Bin liner holder in steel hinged to the drum by screws to easily insert, hook and remove the bin liner. Several bins can be connected to each other by means of two threaded joints made of chrome-plated metal, which fit directly into the holes provided on the sides of the drum.

Accessories: Pocket display code 236
Adhesive labels codes 379, 80326, 324, 325, 326, 327, 328, 329, 330

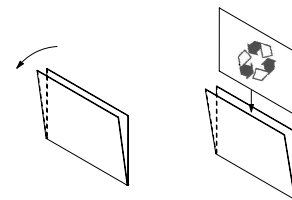
MAXIMO MODULAR baskets meet the "CAM" Minimum Environmental Criteria



Code: **236**

Format: A60

Description: methacrylate display pocket applicable to the MAXIMO MODULAR containers using double-sided adhesive tape.



236

Code: **379**

Dimensions: each symbol 3,8 x 3,8 cm

Description: sheet of 24 combinable adhesive labels consisting of different symbols for separate waste collection.

These labels can be used to customise the MAXIMO MODULAR containers.



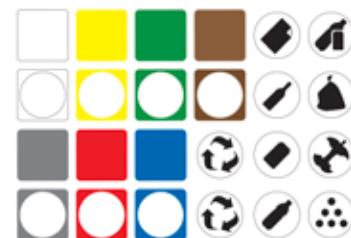
379

Code: **80326**

Dimensions: each symbol 5,5 x 5,5 cm

Description: sheet of hi-tech polymer adhesive labels, consisting of 6 different symbols for separate waste collection.

These labels can be used to customise the MAXIMO MODULAR containers.



80326



Code: **330**

Dimensions: each symbol about 5 x 4,5 cm

Description: sheet of hi-tech polymer adhesive labels, consisting of 6 different symbols for separate waste collection.

These labels can be used to customise the MAXIMO MODULAR containers.



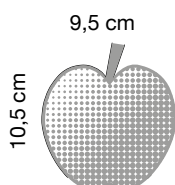
330

Codes: **324, 325, 326, 327, 328, 329**

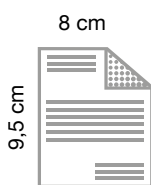
Dimensions: each symbol about 9 x 10,5 cm

Description: hi-tech polymer adhesive labels, with 6 different symbols for separate waste collection. Each label is sold separately.

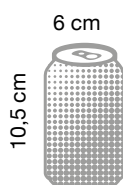
These labels can be used to customise the MAXIMO MODUKLAR containers.



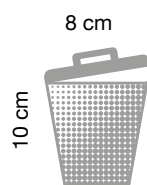
324



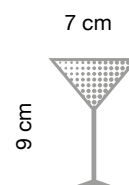
325



326



327



328



329